



# Installation Instructions for Spectrum Light Mirrors with JK Jeep Door Mounts



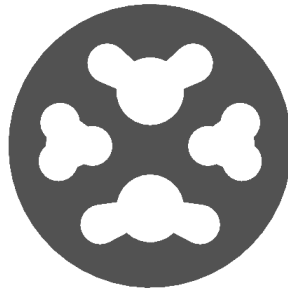
Thank you for purchasing Sector Seven's Spectrum Light Mirrors for your ride! Please read through all instructions before installing product. Installation should be straight forward but if you have any technical questions please contact us. If you do not feel comfortable with the installation, we recommend having a professional install the product.

**\*\*Note: These are for off-road use only. \*\***

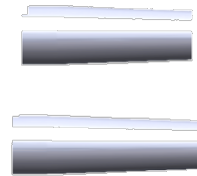
## Package Includes:



Door Plate (qty. 2)



Door Plate Gasket (qty. 2)



Threaded Standoffs (qty. 2  
Upper, 2 Lower)



Screw - M6-1.0x20 (qty. 12)



Screw - M6-1.0x12  
(qty. 4, installed)



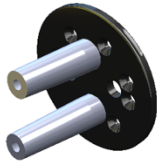
Set Screw - M6-1.0x8  
(qty. 2, installed)



Mounting Block with Arm  
(qty. 1 left, 1 right)

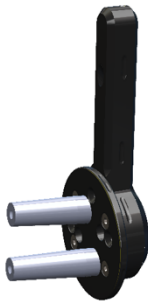


**Step 1** | Remove M6 screw in back side of Door Plate and separate Door Plate from Mounting Block.



**Step 2** | Install Threaded Standoffs onto Door Plate using M6-1.0x20 screws. Ensure that alignment features are correctly aligned. Tighten to 5.7-7.6 ft-lbs.

*Note: It is recommended to use a medium strength threadlocker.*



**Step 3** | Install Door Plate onto Mounting Block. Ensure that alignment pins on Mounting Block are properly seated in alignment holes on Door Plate. Confirm that when viewing mount from the front, Sector Seven logo is aligned horizontally and Threaded Standoffs on the back side are stacked vertically. Connect Door Plate to Mounting Block using four M6-1.0x20 screws. Tighten to 5.7-7.6 ft-lbs.

*Note: It is recommended to use a medium strength threadlocker.*



**Step 4** | Install foam Door Plate Gasket onto back side of Door Plate. Ensure that gasket is oriented correctly by matching up cutouts in Door Plate Gasket with hole locations on Door Plate.



**Step 5** | Back out set screw in Jeep Mount arm until it no longer extends into mirror mounting hole.



**Step 6** | Insert end of ball pivot into mounting hole in arm of Jeep Mount. Tighten set screw to 5.7 – 7.5 ft-lbs. (Note: After assembly is complete, it may be necessary to loosen the set screw in order to access the ball pivot stiffness adjustment bolt to tighten or loosen it as needed. Be sure to retorque set screw to 5.7 – 7.5 ft-lbs.)

**Step 7** | Remove OE mirrors from door. **\*Pro Tip:** If planning to run cable for new light mirror through door, and if existing mirrors are power mirrors, attach a string or wire to factory wire before feeding it through door and leave string/wire inside door (one end on interior side, one end on exterior side) after mirror is removed. Then when running new cable through door, attach end of new cable to string and feed it through door by pulling string/wire back through. \*

**Step 8** | Determine cable routing. Jeeps with factory heated, power mirrors will have a third hole in outer door skin that new light mirror cable will feed through. Jeeps with factory manual mirrors will either need a third hole added, or to route cable elsewhere (possibly through the cowl and firewall).

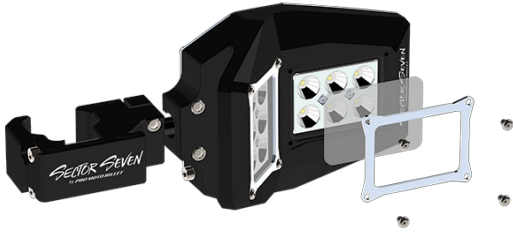
If routing cable through door, feed cable from mirror through Door Mount Arm and down through Door Plate to match up with hole in door. **\*Pro Tip:** It may be helpful to feed something (long zip tie or guide wire) up through the Door Plate and Arm first, then attach end of cable to guide object to help direct cable to correct route. \* Seal hole on backside of door plate where cable exits with silicone sealant (to prevent water from entering door). If original mirrors are manual and routing cable through door is desired, add an additional hole for cable routing. Feed cable through door (see Pro Tip in Step 6) and insert standoffs into door and attach using original M8 bolts (tighten to 10 ft-lbs).

If routing cable through different location (other than through door), do not feed cable through Door Mount arm. Insert standoffs into door and attach using original M8 bolts (tighten to 10 ft-lbs).

**Note** | Route wire avoiding sharp or abrasive edges and provide enough slack for movement of mirror and door. Use grommets or protective sheathing where needed. For best results it is recommended to wire through a fused circuit accompanied by a relay.  
*White wire (+12v) = Lights power*  
*Black wire = Ground*

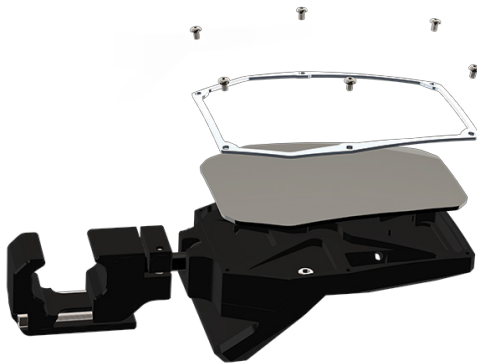


**Step 9** | Adjust light mirror to preferred angle and then tighten adjustment bolt to desired firmness. *Do not exceed 30 in/lb.* (Note: After assembly is complete, it may be necessary to loosen the set screw in order to access the ball pivot stiffness adjustment bolt to tighten or loosen it as needed. Be sure to retorque set screw to 5.7 – 7.5 ft-lbs.



**Lens Replacement** | To replace either of the lenses, first remove the four-M4 bolts, followed by the bezel, then carefully remove the lens. Make sure to clean out any debris from the LED cavity and make sure that the O-ring is clean and clear of debris as well. To install new lens, follow the previous steps in reverse. Tighten bolts incrementally in a diagonal pattern to reduce chance of glass breaking. Torque spec.: 70 in/lb.

*Note: Do not overtighten.*



**Mirror Replacement** | To replace the convex mirror, first remove the six-M4 bolts, followed by the bezel, then carefully remove the convex mirror. Make sure to clean out any debris in the mirror cavity before replacing the mirror. To install new mirror, follow the previous steps in reverse. Tighten bolts incrementally in a diagonal pattern to reduce chance of glass breaking. Torque spec.: 70 in/lb.

*Note: Do not overtighten.*

**Mirror/Glass Care** | Use caution when cleaning mirror/glass; sand, dirt, and mud are very abrasive. If your mirrors/glass have a high amount of mud/debris on them, it's best to spray with water first then wipe with soft cloth or towel. Do not use strong/harsh cleaning products which may damage mirror/glass or anodized surfaces.

**CAUTION!** | Lights/Mirrors could be HOT! Use caution if handling shortly after lights have been on for an extended period.

**Spectrum Warranty** | If Sector Seven determines, in its sole discretion, that your product is defective in material or workmanship, Sector Seven will honor your warranty claim. In some cases, the product may be replaced depending on the specific timeframe of the purchase. If the product is repaired, all parts, labor, and return shipping will be covered.

Warranties cover defects in manufacturing or craftsmanship only. Warranties do not cover, among other things: installation errors, wear and tear, acts of God, misuse, abuse, neglect, accidents, collisions, defects due to custom specifications provided by you, or any product modifications, configurations or combinations not performed by us or on our behalf.

- 5-year manufacturer's warranty on Spectrum housing and clamp. Note: You must be the original owner with proof of product registration within 30 days after purchase.
- 5-year manufacturer's warranty on Spectrum LED lights.
- No warranty on glass and/or anodized coatings.
- Failure to properly register purchase with Sector Seven may void the warranty.
- Register product here - <https://promotobillet.com/sectorsevenproducts/support/product-registration>