

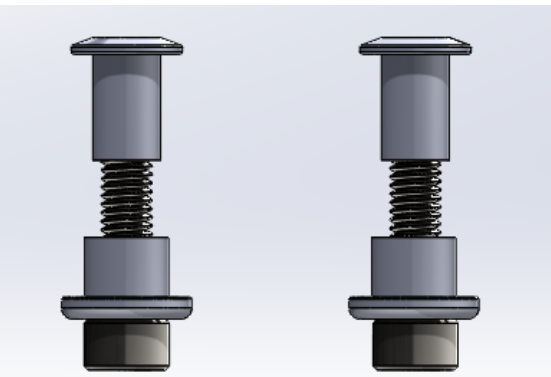


SECTOR SEVEN

by PRO MOTO BILLET

Instructions for Polaris Ranger NorthStar Bung Mount Fit Kit (Single & Crew cab)

Thank you for purchasing Sector Seven's Spectrum Light Mirrors for your ride! Please read through all instructions before installing product. Installation should be straight forward but if you have any technical questions please contact us. If you do not feel comfortable with the installation, we recommend having a professional install the product. ****Note: These are for off-road use only. ****



Parts list

1. (QTY. 4) 44-CC-025, Spacer
2. (QTY. 4) 44-CC-026, Nut insert
3. (QTY. 4) 70-2645, M6 Bolt
4. (QTY. 15ft) EL-002 cable
5. (QTY. 4) Heat shrink connectors

Tools required

1. Drill
2. 5/16" drill bit or step bit
3. Loctite
4. Size 4 and 5 Hex Keys



Directions

Step 1: Print out the cutout template from the product instructions on our website, once you have the cutout template cut along the outer line or simply use the whole piece of paper and tape it to the outside of the door to match the body lines.

Step 2: Once template is placed take off the inside door panel so there is access to feed the power cable through from the mirror to the inside of the cab and to put the hardware through the door frame once step 3 is done

Step 3: Once the door panel is removed you may start drilling out the three holes. We recommend using a center punch to mark the center of the holes and then proceed to use your 5/16" drill bit for all three holes.





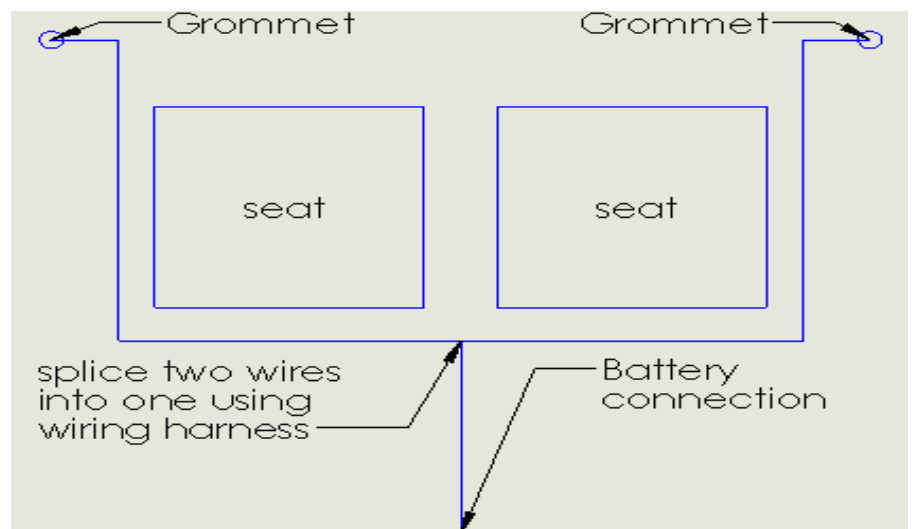
Step 4: After you have finished drilling holes in both driver and passenger doors you may mount the bung mounts to the outside of the doors using the Fit Kit (picture 4), when putting the hardware together make sure to use Loctite in the nut insert (44-CC-025). The nut insert will sit flush with door frame. (make sure the fit kit/bung mount is tightened all the way)

Step 5: Once you have the bung mounts attached to the outside of the doors you may attach your spectrum light mirrors to the bung mounts and feed the power cable through the top hole, after you feed it through, run it along the top of the window like (picture 3), once it is in that position take your 5/16" drill bit and drill out the grommet (picture 5).



Step 6: Take a section of the 15ft of cable (7.5ft) and attach it to the end of the cable that is in the door seal with the heat shrink connectors that were provided. Slide the end of cable that is not attached to anything through the grommet you drilled out in step 5 (picture 6), after you have slid it through, reattach the door panel.

Step 7: After everything is put back together you may start wiring the rest Of your Spectrum Light mirrors, below is a recommended wiring diagram To follow. We recommend using our Wiring harness for easy installation.



CAUTION! | Lights/Mirrors could be HOT! Use caution if handling shortly after lights have been on for an extended period.